

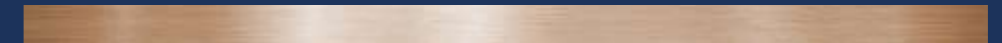


## Best-pick outdoor furniture for Restaurants, Resort, Rooftop and Hotel!





*Best-pick outdoor furniture for Restaurants,  
Resort, Rooftop and Hotel!*





# Brand Introduction

## Less Is Beautiful!

In view of the discussions about climate change today, the topic of sustainability is becoming more important in many sectors, including outdoor restaurant furniture. In the development of new models today, more and more attention is being paid to plastic wood since it is recyclable and environmentally friendly. Nowadays, furnishing restaurants' outdoor dining space is a question of ergonomic planning and comfort, both on streets and in squares. With no-frills and no-add-ons, our products are particularly suitable for outdoor dining, while still maintaining their value and attractiveness. The purist designs of Coets furniture represent our values of conciseness and beauty. Many new pieces of our outdoor furniture take on a thoroughly minimalist appearance with brushed aluminum and an industrial style. They can be found in outdoor settings throughout Australia, New Zealand and the RCEP countries.

Coets Furniture is a 14-year-old business, with a team of in-house designers and engineers, providing outdoor dining solutions to outdoor restaurants with our minimal style furniture.

Our brand of Coets literally means "timber". Why? Almost all furniture of Coets are made of brushed aluminum and plastic wood, which has features of "best-of-both-world". Plastic wood provides a look of timber regarding texture and color etc. while it is all-weather and environmentally-friendly. We adopt best of both worlds: plastic wood-a sense of coziness and brushed aluminum-a sense of modern.

Whether you're an architect, a designer, a central purchasing agency, a contractor, or restaurant owner, we're here for people like you. People who love minimalist style, industrial style and environmental-friendliness. People who want to stand out with a taste and assertion and people who don't want to blend into the background. People who, like us, think an outdoor restaurant should make a style statement: high-end, on-trend, and personalized in design accompanied by comfort, functionality and durability, tailor-made for restaurants.



# Why Brushed Aluminum

Benefits and advantages of brushed aluminum:

## VS Stainless Steel

- Light in weight
- More cost-effective
- Refined
- Cozy

## VS Powder Coating Aluminum

- High-end
- Stylish
- Industrial style
- Different and unique



More than 14+ years experience in outdoor furniture.



Best-pick outdoor furniture for restaurants.



R&D team with in-house designers and engineers.



3D simulations of furniture combinations and business function layout.



ISO9001 certified with streamlined management system and internal audit.

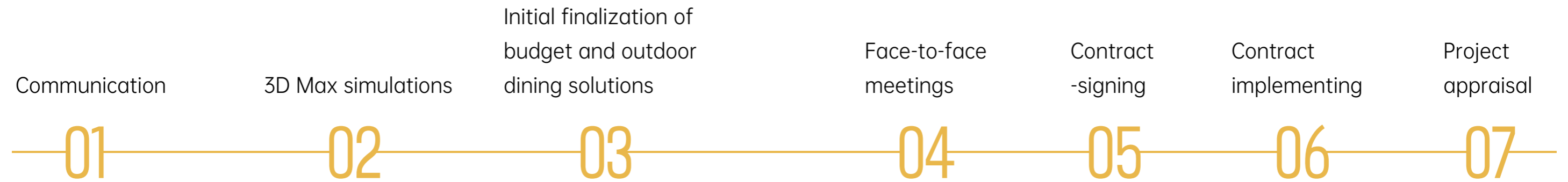
## Why Us

Aluminum



Champagne

# Flow Chart of Contract Orders



5

Thorough understanding of each other regarding company capability, specialization, reputation and target of the project. Pre-selection of products, color proposals, layout solutions and project analysis.

Our chief designer is majoring in Mechanic Graphing and Advertising Design. He has hands-on experience in contract market outdoor furniture. Our designers output 3D-visualizations as a result of pre-communication between the sales and customers.

You will receive individually-created configurations and placement suggestions with our furniture for your specified areas as well as professional color proposals.



- 6
1. Consultancy in outdoor dining solutions, including but not limited to positioning, target customer analysis, seating capacity, space utilization and color matching.
  2. 3D simulations of layout proposals.
  3. Ready stock of best sellers with immediate delivery.
  4. Free spare parts of certain products.
  5. Customizations in sizes and colors.

## Our Service:

# CONTENTS

|   |        |       |
|---|--------|-------|
|   | Ayers  | 09    |
| <b>Dining set<br/>&amp;<br/>Bar set</b> | Erica  | 15    |
|   | Fay    | 19    |
|   | Huron  | 21    |
|   | Marley | 25    |
|   | Ashley | 34    |
| <b>Sofa</b>                             | Fairy  | 37    |
|   | Joyce  | 47    |
|   | Zoe    | 43    |
|   |        | Keith |
| <b>Sun lounger</b>                      | Kim    | 53    |
|   | Rex    | 59    |
|   | York   | 65    |
|   |        | Dale  |
| <b>Parasol</b>                          | Derek  | 71    |

Dining set & Bar set

# Ayers & Delia



It is so minimal, so concise and so straight forward. That is why we call it minimalist style. The brushed aluminum is very industrial style, both aluminum and champagne color. Industrial style is something trendy and popular over the last three years especially with the young generation.



Details close-up





11

12



Project Name

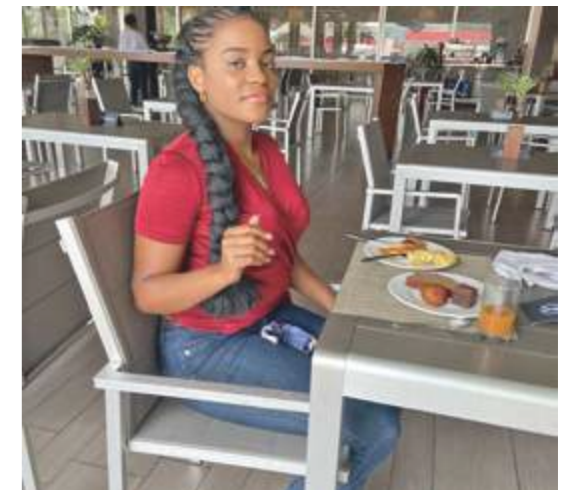
Pullman Kinshasa Grand Hotel



Location  
Congo

Product  
Ayers & Delia & Rex sun lounger

Year  
2019





Dining set & Bar set  
**Erica & Joe**



Details close-up

The concise style makes Erica the best-pick dining table for the restaurant. There are different sizes to match with different restaurant spaces. Thanks to the brushed aluminum structure and the plastic wood top, highly weather-proof and resistant to UV rays, it is optimal to fulfill the needs of any kinds of outdoor restaurant location.





Project Name  
 Club Simared Baia Mare

Location  
 Romania

Product  
 Erica & Joe

Year  
 2019



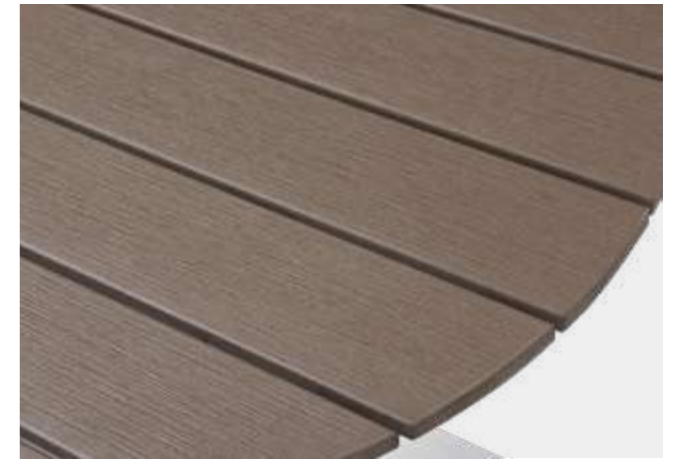


Dining set & Bar set  
**Fay & Claire**



Round table is the new design in Coets. It also creates a more private and friendly space feeling for the restaurant. Minimalist, industrial style and environmental friendly are the main characters of Coets. Enjoy your dinner time with Fay concise tables !

Details close-up







Huron  
&  
Claire

Imagine that when you eat out with your beloved in the rooftop restaurant, you want to have something outdoor to relax in and to be related with natural surroundings as well as outdoor being. Huron is the best-pick bar set: environmentally friendly, minimalist style and industrial style.



Details close-up







Project Name  
Thavorn Palm Resort



Location  
Australia

Product  
Huron & Claire

Year  
2018



Dining set & Bar set

# Marley & Joe



Speaking of the wood, we also attach a lot of importance to environmentally friendly. For the plastic wood, a lot of environmental protectors, they are so fond of using sustainable and synthetic materials and elements for their home, gardens or restaurants they visit. That's why we apply a lot of plastic wood which frees all the worries from them.

Details close-up









Project Name

Pullman Kinshasa Grand Hotel

Location

Congo

Product

Marley bar table & Joe bar chair

Year

2019







Project Name  
Hotel Naoz

Location  
Costa Rica

Product  
Marley & Joe

Year  
2020







Sofa  
**Ashley**

Olefin fabric from Taiwan which is eco-friendly, anti-UV and water-resistant. Cushions are made with uniformed fullness, streamlined sewing, needed resilience and extreme comfort.

Scenario shows

Ashley

35



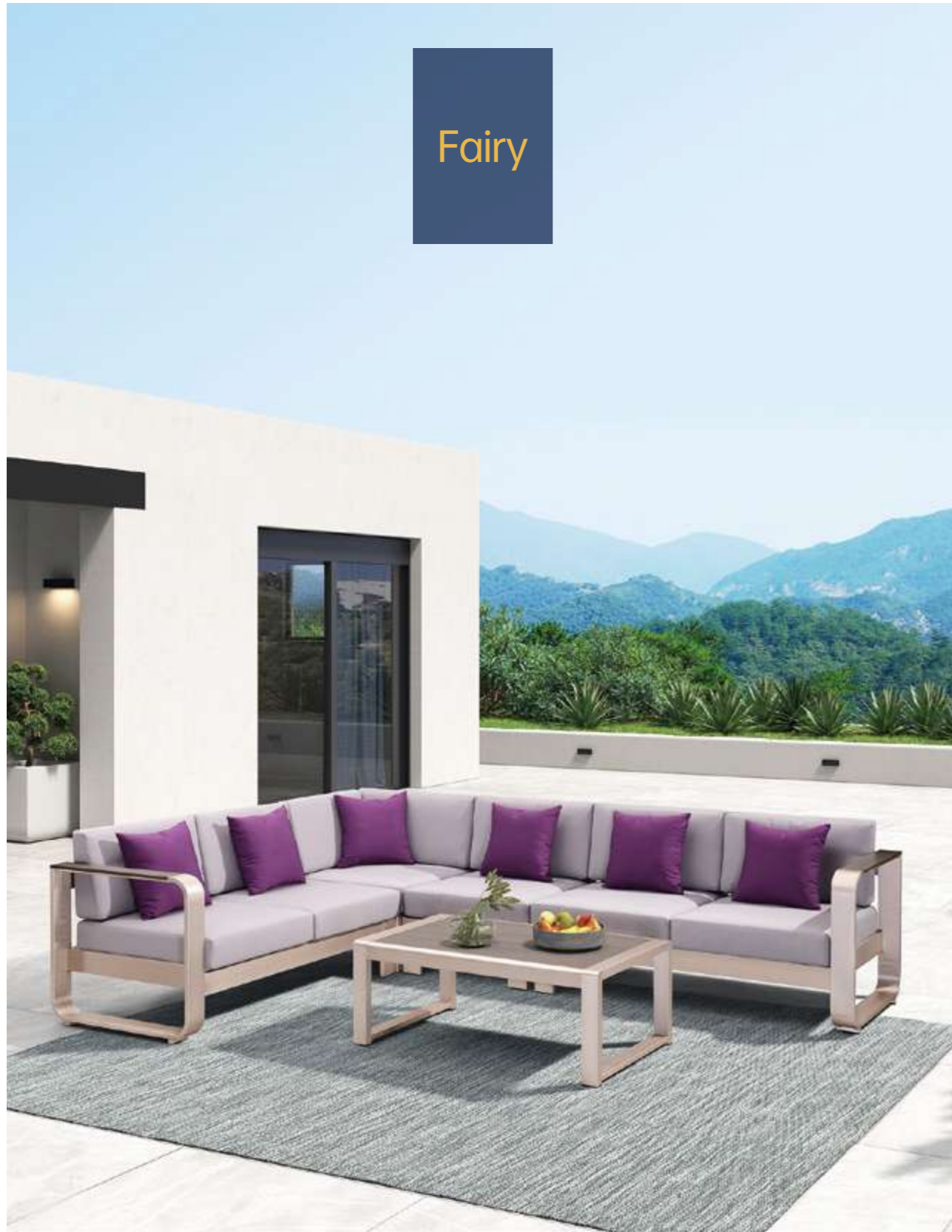
36



Details close-up



Fairy



Sofa  
**Fairy**



A beautiful and concise design with the industrial style creates a joyful heaven for the gatherings, in the rooftop restaurants or the seaside restaurants. Leisure sofa is the best choice in the corner dining area for people to relax.







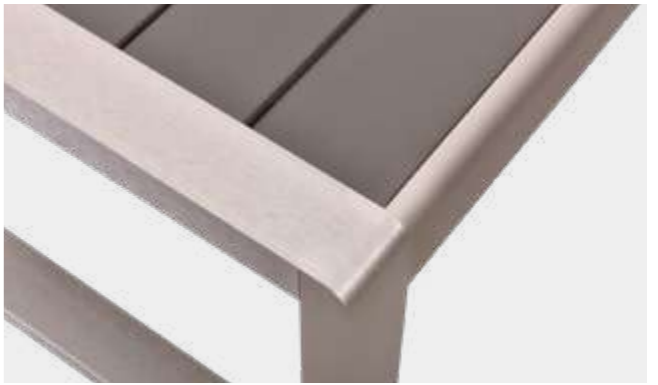


41

Scenario shows



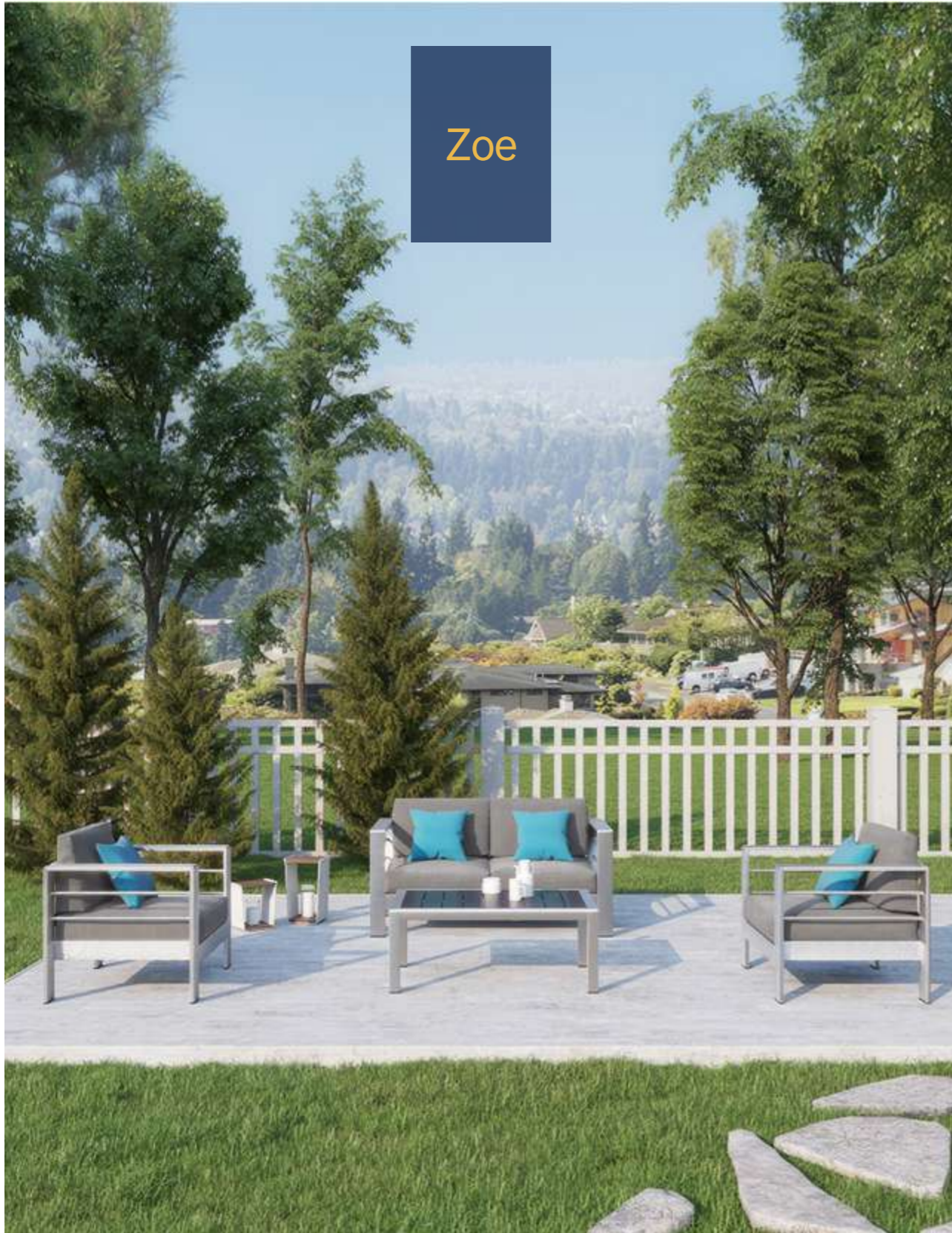
42



Details close-up



Zoe



Sofa

Zoe



Coets presents not only a unique personality, but also the pursuit of quality life with your beloved: minimalist style, environmentally-friendly and industrial style. for restaurants!





45

Scenario shows



46



Details close-up

Joyce



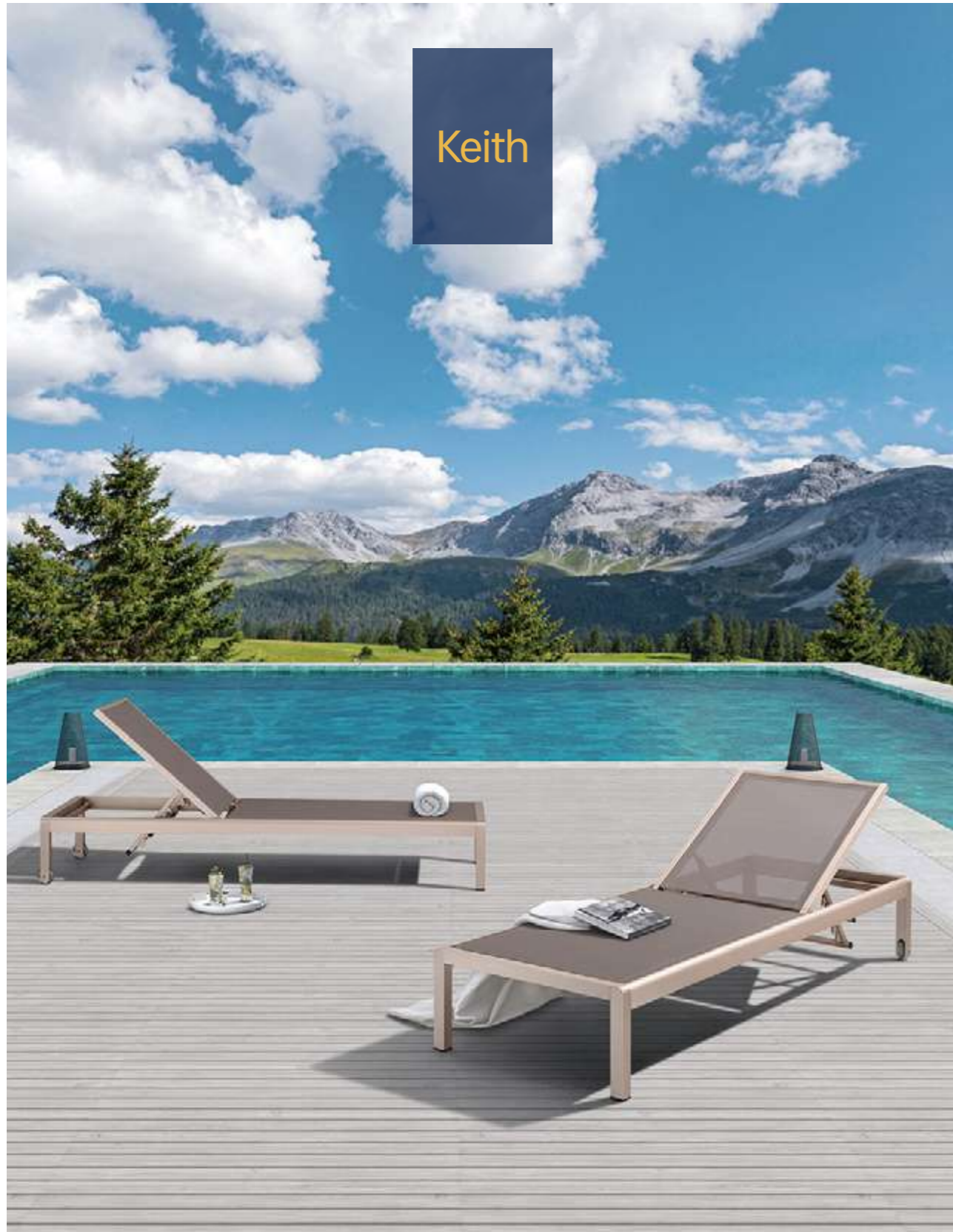
Sofa  
**Joyce**



Our outdoor sofas are designed to be versatile, offering a range of configurations to suit your needs. They are also easy to maintain, with all-weather durability, making them perfect for outdoor use.



Keith



Sun lounger

**Keith**



Minimalist style and industrial style are the forte of the Keith design. Keith is a precious ally for moments of relaxation and fun, lying in a private garden or on the beach of a refined resort.





51

Scenario shows



52

Details close-up



Kim

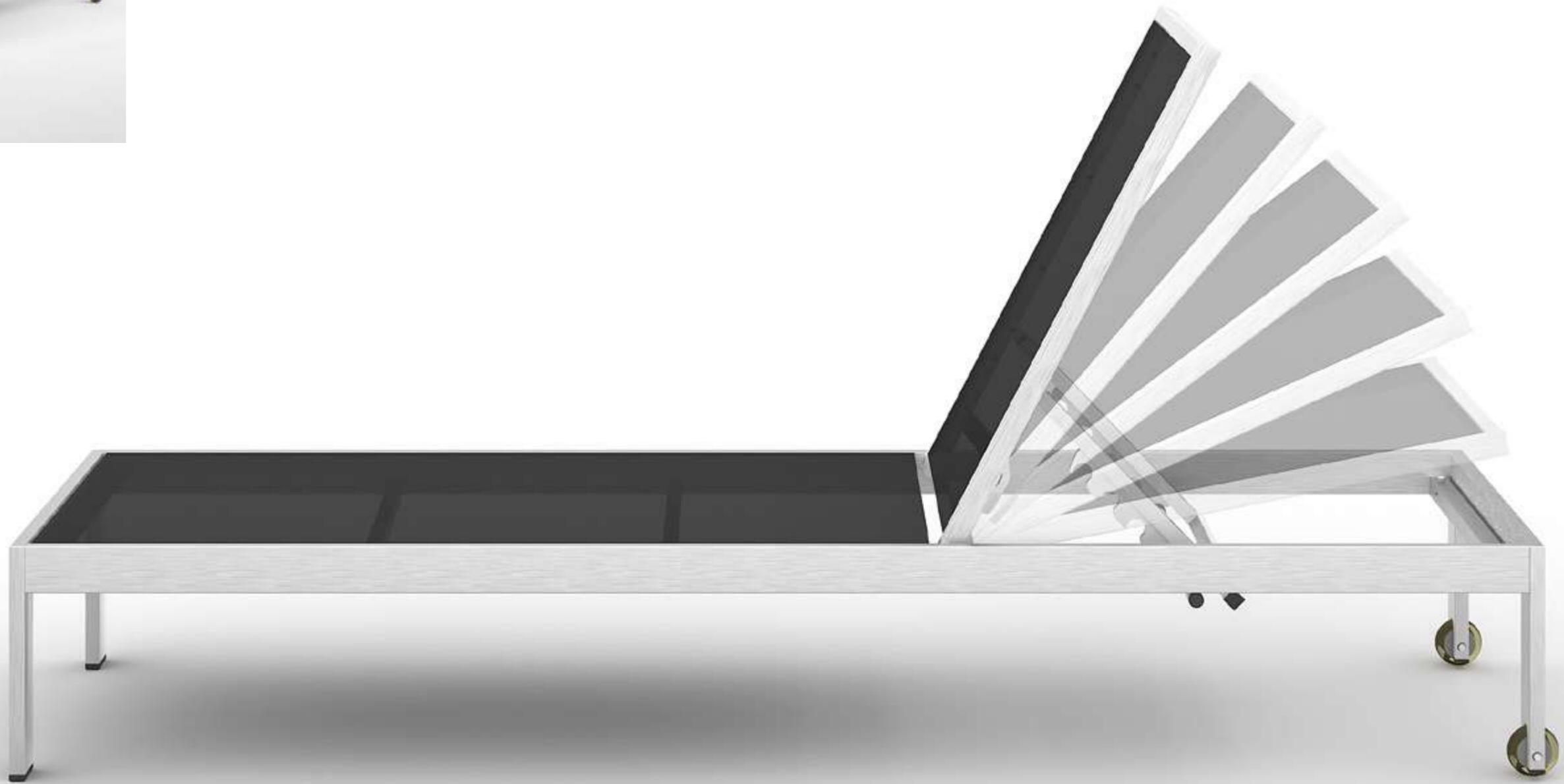


Sun lounge  
**Kim**



Kim sun lounge will continue to bring a feeling of pride every moment you make your way out to your outdoor oasis.

Less is beautiful!











59

60

Sun lounge

# Rex

Like a sexy lady, Rex sun lounge is super comfortable with a lightweight brushed aluminum frame and 5-position adjustable backrest. Pairing with the side table, they will surely become a favorite swimming pool go-to!

Scenario shows



Rex



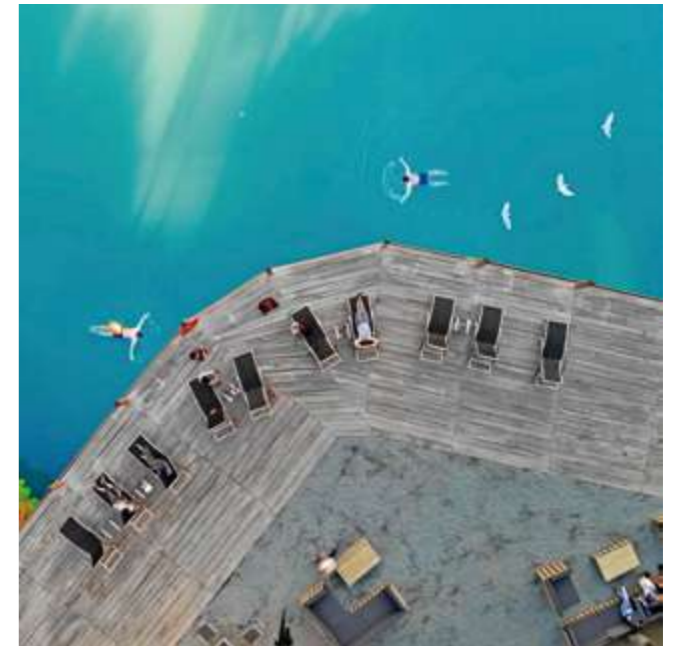


Project Name  
Club Simared Baia Mare

Location  
Romania

Product  
Rex

Year  
2019







Lounge chair

# York

The frame is made entirely of brushed aluminum, a lightweight but extremely robust material that is especially suited to use in outdoor settings, given its remarkable resistance to corrosion caused by weather and salt water.

Scenario shows



York





Dale



Model 810187  
Frame & Pole Aluminum  
Connection Cast aluminum  
Fastenings Stainless steel  
Size 2.5 X 2.5m



Model 810182  
Frame & Pole Aluminum  
Connection Cast aluminum  
Fastenings Stainless steel  
Size  $\phi$ 2.7m

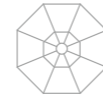
Parasol

Dale





Derek



|              |                 |
|--------------|-----------------|
| Model        | 810184          |
| Frame & Pole | Iron / Aluminum |
| Connection   | Cast aluminum   |
| Fastenings   | Stainless steel |
| Size         | Φ3m             |

Parasol

Derek



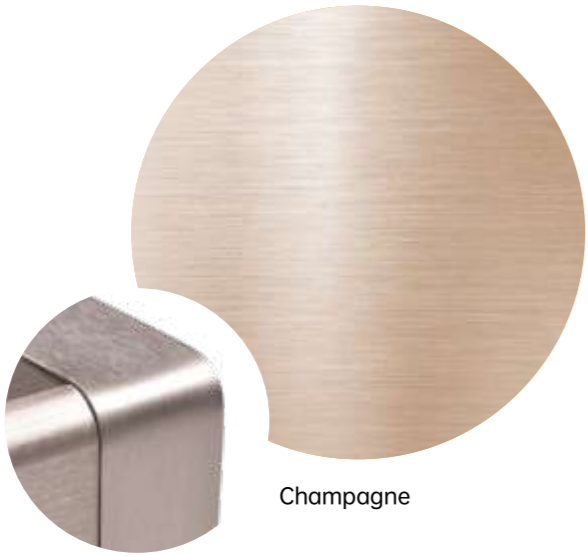


# Color Combinations

## Frame Finish



Aluminum



Champagne

## Plastic Wood



Carob



Chocolate

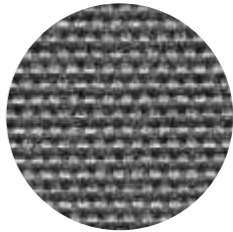


Tawny

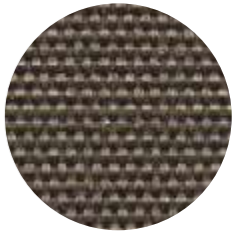
## Cushion



Buff

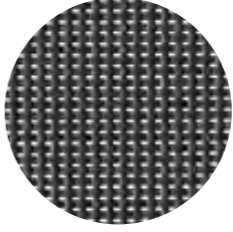


Coin

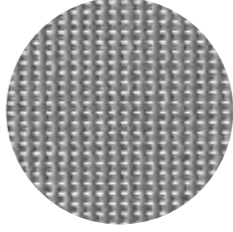


Suntan

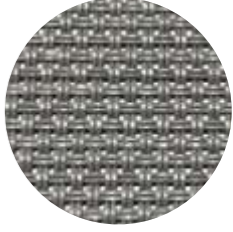
## Sling



Black

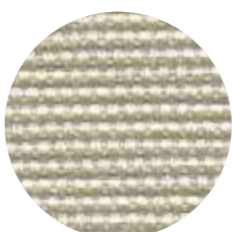


Grey

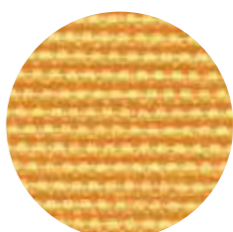


Steel

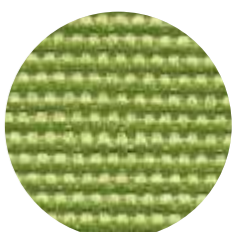
## Pillow



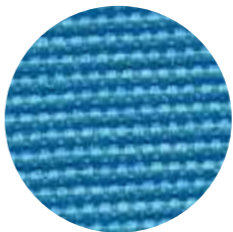
Natural



Canary



Lime



Azure



Violet





## Brushed Aluminum

This finish is perfectly close to stainless steel color after brushing and oxidizing, yet with a touch of changing and refined texture, a sense of glossiness and a feeling of chic, industrial style as well as minimalism.

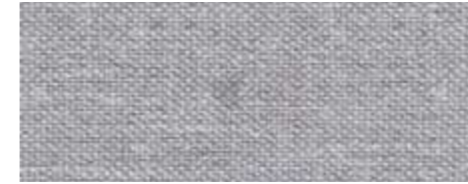
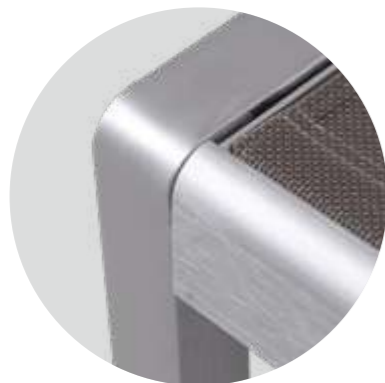
This application benefits customer with stainless steel texture at a much lower cost.

Aluminum has much less weight and helps our customers to move around the furniture much more easily.

All-weather and durable.

Compatible in matching with all kinds of furniture materials, e.g. teak, plastic wood, sling, glass, upholstery and rattan.

Available colors: aluminum and champagne.



## Fabric

Excellent weathering performance esp. in UV Protection.

Easy to maintain.

Hygiene protection and anti-bacteria with quick dry foam to drain the water from rain or dew.

Direct contact with the skin.

Durable.

Water repellent.



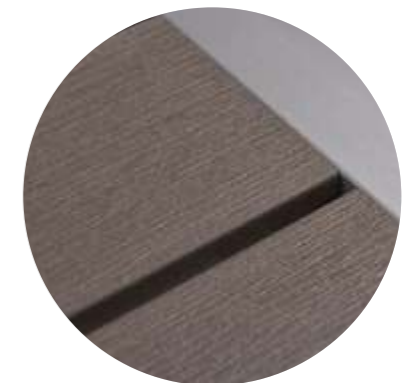
## Plastic Wood

Outstanding weathering performance.

Reliable UV-resistance.

Durable tensile strength.

A better option than timber.



# 01

## General

1. These are only general recommendations that cannot ensure unreservedly 100% removal of stains or any other kind. We recommend in all cases that you consult a local professional cleaner if possible.
2. You can always order protective covers from us so that your patio furniture is in tip-top shape.

# 02

## Brushed Aluminum



Aluminum furniture including brushed aluminum furniture, though intended for open-air use, will definitely weather. After some time, the sparkle will blur from over-exposure to the sun and downpour. Extreme oxidation from the air can turn into an issue. It pays to take care of your aluminum furniture from the very first moment and to evade this. You may need to use protective covers when not in use for an extended period of time.

You should occasionally clean the aluminum with water, and do not use any concentrated acids or bases cleansers as these may damage the finish.

# 03

## Plastic Wood



- 1. How to clean plastic wood furniture**  
Plastic wood materials are all UV protected and purified. For the purpose of general cleaning and care, furniture can easily be cleaned with soap and warm water, using cloth, sponge or soft brush.
- 2. How to remove dirt and debris**  
The affected area should be sprayed off with a hose to remove surface debris. Use warm, soapy water and a soft bristle brush to remove dirt and debris from the grain pattern of the furniture.
- 3. How to remove oil/grease/food**  
All food spills should be removed as soon as possible. To remove, spray off with a hose and use warm, soapy water and a soft bristle brush to remove spills from embossing pattern.
- 4. How to remove surface scratches or marks.**
  - (1) Use abrasive paper to remove the surface scratches or marks that otherwise cannot be cleaned.
  - (2) Do always sand in the same direction as the timber grain, never across the timber grain.
  - (3) Don't use stiff or wire brush, or steel wool. This may remove the softer part of the grain, and leave unwanted textured surface.
- 5. Kind reminders:**
  - (1) Don't leave glass cups, glass jars or wine glasses on the plastic wood slats barely under the sun to avoid possible blistering caused by melting.
  - (2) Live cigarettes are forbidden to put onto/into the plastic wood slats to avoid melting and damaging.

# 04

## Fabric



One of the best ways to keep Coets fabric looking good is to brush off dirt before it becomes embedded in the fabric and wipe up spills or clean soon after a stain occurs. The quicker you clean spills and stains, the more easily they can be removed.

### For easy day-to-day maintenance of Coets fabric:

1. Brush off loose dirt.
2. Spray on a cleaning solution of water and mild soap.
3. Use a soft bristle brush to clean.
4. Allow cleaning solution to soak into the fabric.
5. Rinse thoroughly until all soap residue is removed.
6. Air-dry.
7. Do not dry-clean.
8. Do not wash the fabric with washing machine.

# 05

## Sling



### How to clean and maintain sling furniture:

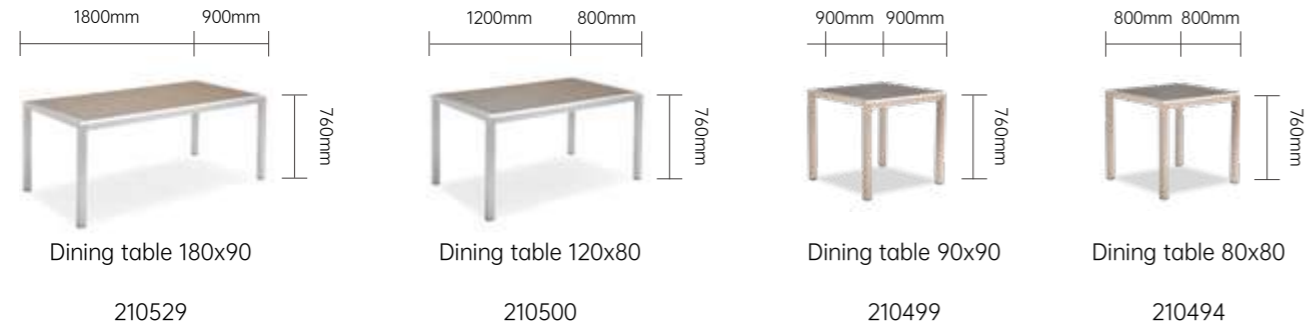
1. In the event of a sticky or tough stain, use a solution of mild soap and water to clean your sling furniture. Hose down and wipe dry with a soft cloth, hold the nozzle at least 60/70 cm from the product surface (please do not use a cleaning agent that contains ammonia or any other harsh chemicals).
2. Use water and liquid, non-abrasive, colorless detergents with a neutral pH, and leave the detergent to act for a few minutes, if necessary.
3. Mix one cup of mild household bleach in three gallons of water.
4. Apply this to the fabric areas and then rinse thoroughly with clean water.
5. If stained, treat your sling fabrics as soon as possible to prevent the stains from setting in.

# Maintenance Instructions



# Product Size

## Ayers



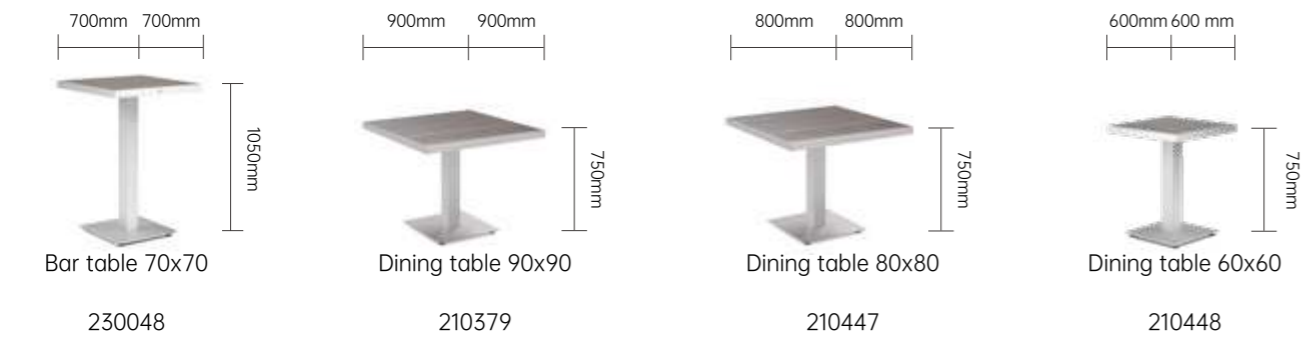
Dining set & Bar set

## Huron



Dining table

## Erica



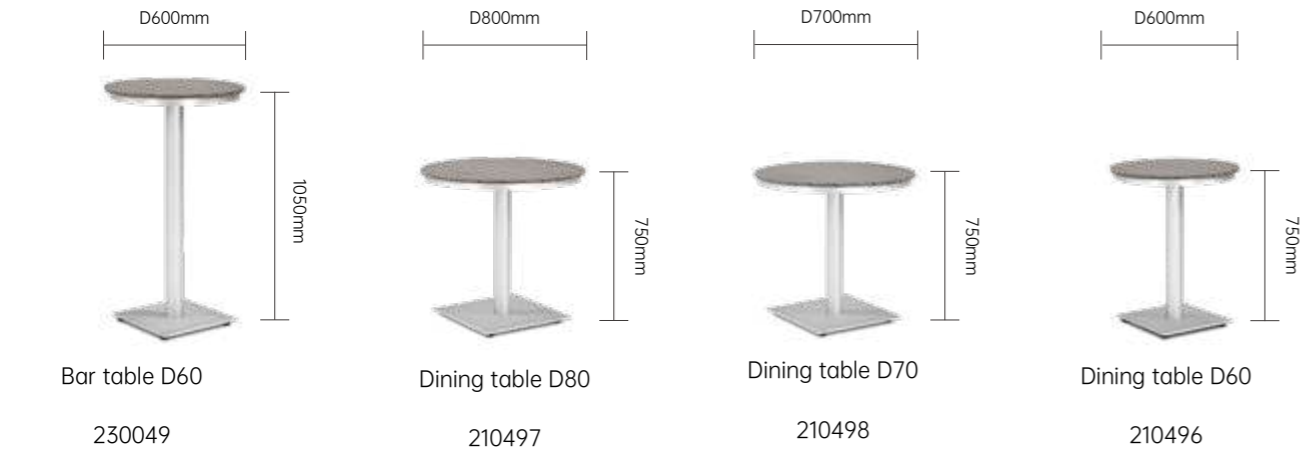
Dining set & Bar set

## Marley



Dining set & Bar set

## Fay



Dining set & Bar set



## Joe

Dining set & Bar set



## Delia

Dining set & Bar set



## Claire

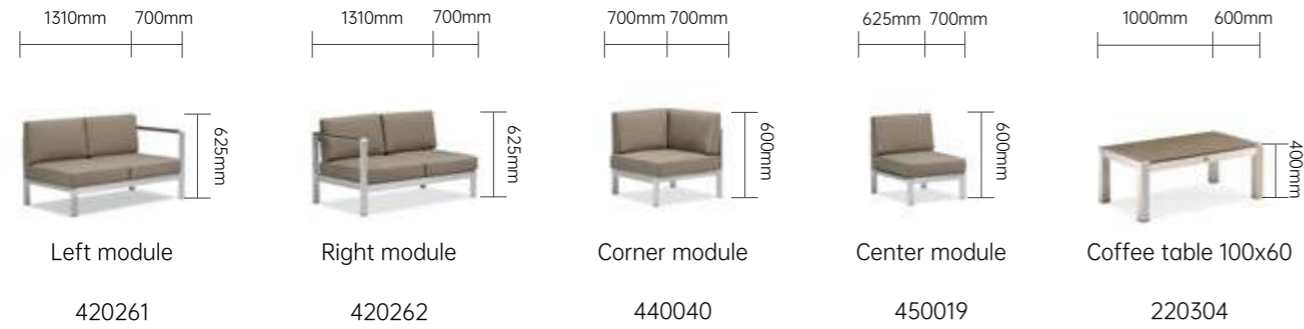
Dining set & Bar set





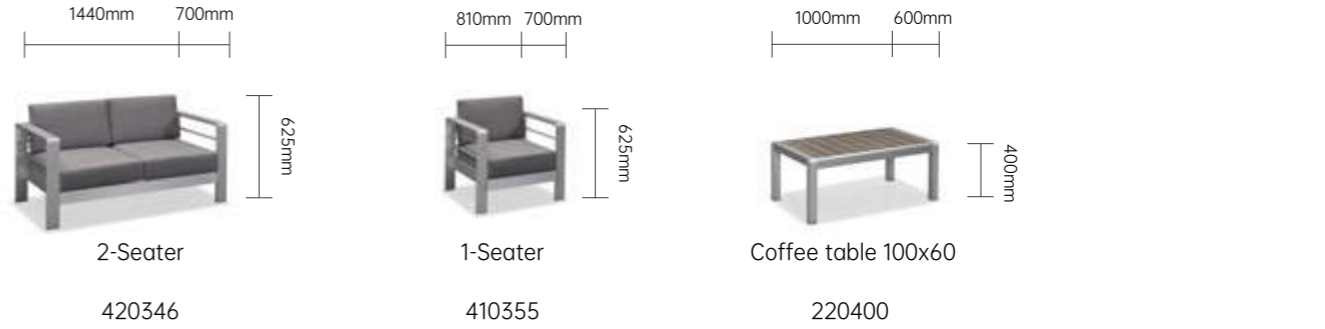
## Ashley

Sofa



## Zoe

Sofa



## Fairy

Sofa



## Joyce

Sofa



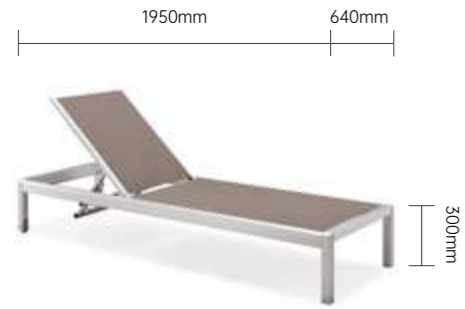
## Fairy

Sofa



## Keith

Sun lounger



Sun lounger

310201

## Kim

Sun lounger



Sun lounger

310200

## Victoria

Side table



Side table

220314

## Rex

Sun lounger



Sun lounger

330088

## York

Lounge chair



Lounge chair & Footstool

310194 & 610021



# Pillow

Size: 400\*400 mm



Azure E20021



Canary E20040



Natural E20041



Lime E20038



Violet E20034

# *Contact us*



## **FOSHAN LEISURE TOUCH FURNITURE CO., LTD.**

Nr. 9, Guangzhan Road, Lecong Town, Foshan, China

+86-(0)757-28101459      +86-13928590459

[info@coets.com](mailto:info@coets.com)

[www.coets.com](http://www.coets.com)